

CHARGED-PLATE MONITOR

ARC-P102ZA

제품사양 / Product Specifications



Category	Specifications
본체 크기 (Body dimensions)	63mm(H) x 130mm(W) x 150mm(D)
Plate 크기 (Plate dimensions)	15cm x 15cm
정전 용량 (Body)	20pF ±2pF
본체 무게 (Body weight)	Approx. 2kg
입력 전압 (Input voltage)	12VDC±10%
입력 전류 (Input current)	1A
Battery 용량 (Capacity)	LiMH, 7.2V-6Pack
Battery 충전 시간 (Charging time)	3hrs(~ Full charge)
Battery 사용 시간 (Use time)	8hrs(~ Full charge)
Decay Time / Accuracy	Start/Stop-Accuracy: 설정값의 ±1V이내 Time Resolution : 0.1sec / 0.1~999.9sec
Decay Time (Adjustable)	Start Voltage : 1~±1000 / 1V 단위조절 Stop Voltage : 0~±999 / 1V 단위조절
사용 온도 (Ambient temperature)	5°C ~ 35°C/
사용 습도 (Ambient humidity)	Under 80%RH (No condensation)
보관 온도 (Storage temperature)	-20°C ~ 75°C
보관 습도 (Storage humidity)	Under 80%RH (No condensation)

※ 제품의 사양은 성능 개선을 위하여 별도의 통보 없이 변경될 수 있습니다.
Specification is subject to change without notice for the improvement of product performance.

제품장점 / Advantages

Plate 손잡이 구조 / 본체 컨트롤러 소형/경량화로 우수한 휴대성
Plate Handle Structure / Compact controller / light weight & portability.



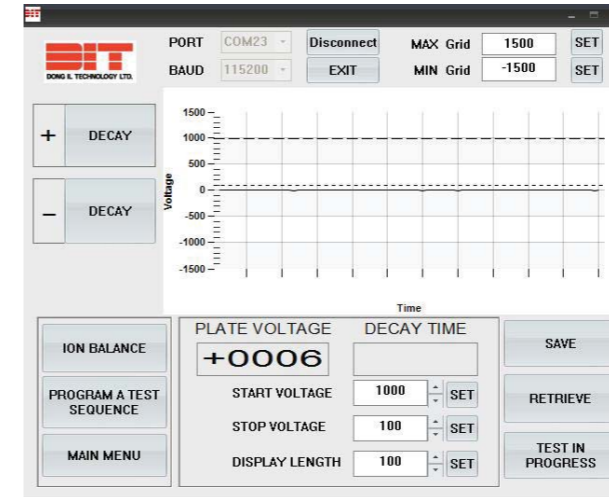
무상 제공 프로그램을 이용한 PC에서의 측정값 확인 및 저장 가능
It is possible to check and save a measured value on PC with free software.



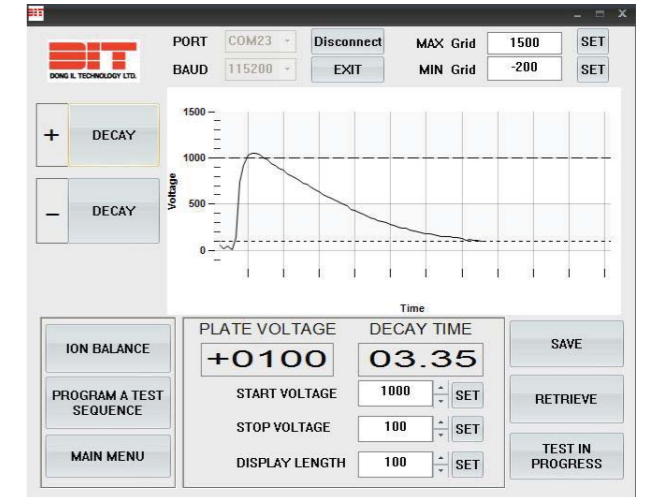
CHARGED-PLATE MONITOR

측정 그래프 / Measurement Graph

<Ion Balance>



<Decay time>

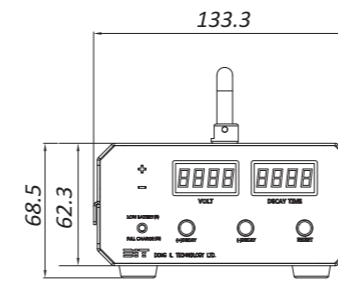


※ 상기 그래프는 당사 제전기를 이용한 임의 측정자료입니다. (This graph is based on our ionizer.)

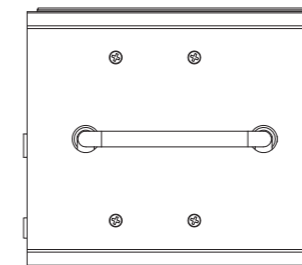
제품외관도 / Dimensions

(Unit : mm)

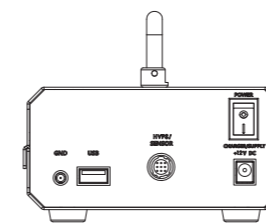
<CPM Control box>



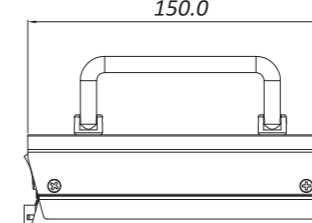
<Front View>



<Top View>

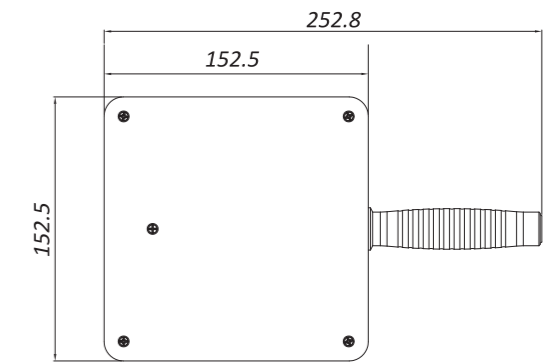


<Rear View>



<Side View>

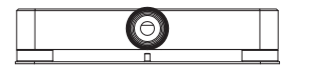
<CPM Plate>



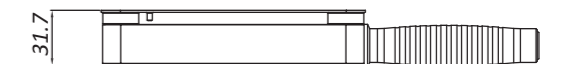
<Top View>



<Front View>



<Rear View>



<Side View>